

SPACES

WORD TAB FUNERALS

ORDER OF SERVICE

Chapel

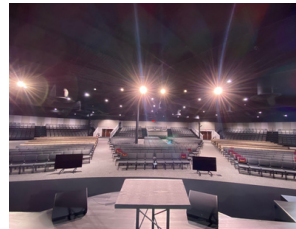
- Capacity: 165
- Creates an atmosphere of intimacy

Center for Performing Arts and Worship

- Capacity: 2000

Estimating Attendance

- It can be difficult to estimate how many people will attend a funeral or memorial. It is important to remember that the attendance at the end of life celebration is not a measurement of how much someone was loved or the impact their life had on others.
- Attendance can be unpredictable because it may be affected by other's availability, travel, and other factors.
- We find that it usually best to host services in the chapel unless circumstances, relationships, and life engagements have a high predictability of over 165 people attending.
- The average funeral has approximately 100 people in attendance.



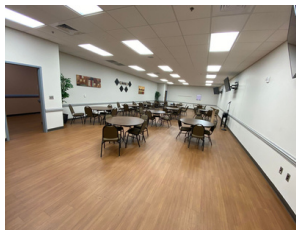
REPAST

Spaces

- Room 448: Capacity 75
- Banquet Hall: Capacity 350

Details

- Repasts are not a part of WTC hosting funerals.
- Families are able to rent spaces for repasts at The Impact Center
- Contact The Impact Center at 252-442-2925



DAYS, TIMES, & COSTS

This applies for all Funerals Hosted and Officiated by WTC

Sunday-Thursday

- No cost to families. Our office hours are Monday-Thursday, 9am-5pm. Our staff is on campus and able to serve at no additional cost.
- Donations to the ministry are welcome but they are not required.

Saturday

- \$750 for the CPAW and \$500 for the Chapel
- Funerals hosted on days we are not open will require contracted workers to come and help serve families. Our goal is not to make money from serving families, it is simply to cover the cost of those working to serve the families.

WHAT WE OFFER

Our goal is to support families in a way that allows them to simply show up on the day of the funeral/memorial and embrace the moment without having to worry about who is fulfilling various roles. We will serve in all capacities to allow families to honor and celebrate their loved one. WTC will provide the following...

- Music
- Greeters
- Stronghold Keepers
- Media
- Streaming on WTC Platforms
- A link to the Recording of Service
- Preaching/Officiating
- Floral Bearers
- Pall Bearers
- Presiding
- All aspects of the service except reflections

The Musical Prelude
The Processional and Final Viewing

Song of Assurance

The Message of Scripture

-Old Testament

-New Testament

Prayer of Consolation

Reflections (2 Minutes please)

-Name (Required)

-Name (Required)

Acknowledgements

Obituary (Read Silently)

Song of Comfort

The Message of Comfort

The Funeral Director's Remarks

The Recessional

Pall Bearers - Wise Warriors of WTC

Floral Bearers - Wise Warriors of WTC

Floral Bearers - Intercessory Prayer Team of WTC

- Special Guests: We want to honor families who may have pastors or spiritual leaders who want to participate in the service. We invite them to read the scriptures. They can also do the Prayer of Consolation and to have two minutes of remarks during that time if they desire.
- Reflections: Families are encouraged to choose two people who can speak about their loved one for two minutes each during the service. Many people may want to share remarks about your loved one. We encourage families to create opportunities for open remarks during wakes, at the family home, or during a repast.
- WTC does not charge for serves offered by WTC which are scheduled Monday-Thursday but families who choose to have alternative offerings must cover any costs accrued by those offerings. Ex: Musicians,
- We want to ensure each family has a unique experience. Families are able to requests a specific song and our music department will try to fulfill the requests.
- Anyone who participates in the program must have their name and activity printed on the program
- This structure allows us to honor families while keeping services one hour long

HERE WITH YOU AND FOR YOU

Word Tabernacle Church (WTC) gathers and serves out of The Impact Center. It is important to understand the difference between a service that happens at The Impact Center versus a "Word Tabernacle Funeral". A

Word Tabernacle Church Funeral...

- Utilizes the WTC Funeral Structure
- A WTC Pastor/Minister preaches
- WTC Ministries support and serve
- Location: At The Impact Center or appropriately designated space

WTC FUNERAL PROCESS

- Contact and meet with your chosen funeral home for general funeral information
- Schedule a Family Meeting with WTC's Funeral Ministry to...
 - Plan service
 - Solidify Date and Time
 - Engage with details
 - Inform who will take part in the service
- Complete the program/obituary
- Funeral Home will send a copy to be proofed and get final approval by WTC before printing

NON-WTC FUNERALS

- It is possible for families to utilize The Impact Center for a service but not utilize WTC's Funeral Ministries.
- Instructions and more information are located on the back of this brochure under "Impact Center Funerals."

FUNERAL HOMES AND BURIALS

- HD Pope, William Toney, and Matthews Funeral Homes are most familiar with WTC Funeral processes
- WTC manages and Impact Point Memorial Gardens

WTC FUNERAL MINISTRIES

ASSOCIATE PASTOR
STEPHANIE BATTLE
252-316-8309
WWW.WORDTAB.NET

THE IMPACT CENTER

FACILITIES SERVICES
ZELMA PEELER
252-316-8525
WWW.WORDTAB.NET

IMPACT CENTER FUNERALS

An Impact Center Funeral is a funeral that happens at The Impact Center but is not serviced by Word Tabernacle Church.

- Align with or not contradict Christian theology
 - While The Impact Center is a space to be utilized for the community, it is established by a faith-based organization. Word Tabernacle Church is a Christian Church
 - We honor other's beliefs and ask that ours be honored as well, even if they are not accepted and practiced. Ceremonies that are in opposition to Christian theology are not permitted
- Families are completely responsible for all aspects of the funeral and ceremony
- Contact Facilities Services for rental information
- Cost varies based on the dynamics of the service
 - Space Rental
 - Personnel
 - Facilities
 - Security
 - Services Rendered
 - Media
 - Music



Funerals and Memorials

821 WORD PLAZA
ROCKY MOUNT, NC 27804
252-442-2925
WWW.WORDTAB.NET